

Cyclone Advisory



CYCLONE MICHAUNG

05/12/2023 | Severe Cyclonic Storm

RMSI has been tracking the formation and the progress of Cyclone Michaung since 28th November 2023. In our last advisory dated 4th December 2023, we mentioned that severe cyclonic storm Michaung was moving towards the coast of Andhra Pradesh at a speed of 10 kmph. As per the IMD Bulletin issued on 5th December, 2023 at 1000 hrs. IST, Michaung has moved northwards from South Andhra Pradesh Coast with a speed of 12 kmph. It has made landfall close to Bapatla as a severe cyclonic storm with a maximum sustained wind speed 90-100 kmph.

The Figure 1 depicts the observed and the forecast cyclonic track with expected maximum sustained wind speeds. The Figure 2 depicts the “cone of uncertainty” for the cyclonic storm. The "cone of uncertainty" is a graphical representation to illustrate the potential path of a tropical cyclone. It depicts the probable track that the center of the storm might follow over a specific period.

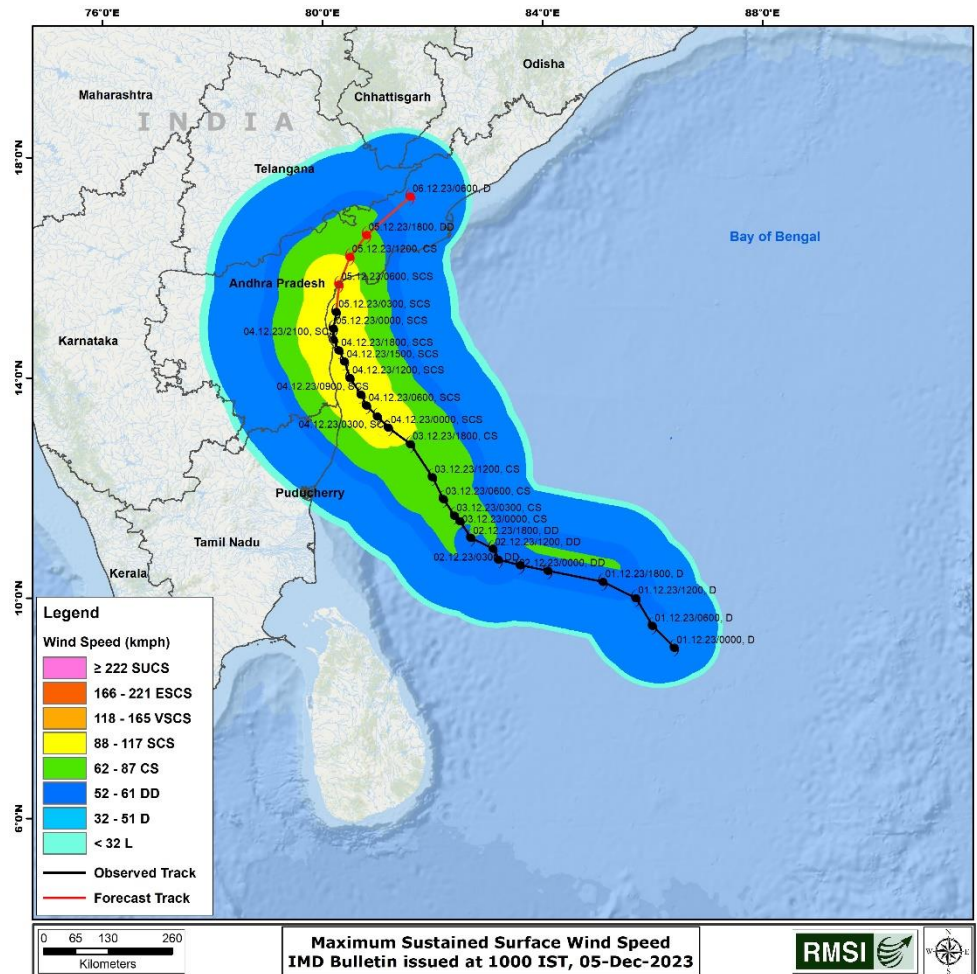


Figure 1: Observed and forecasted Track along with modelled wind speed

DISCLAIMER: This report contains information generated through the analyses, and model predictions based on data provided by IMD and compiled using proprietary computer risk assessment technology of RMSI Pvt. Ltd. The technology and data used in providing this information is based on the scientific data, mathematical and empirical models, and encoded experience of scientists and specialists (including without limitation, earthquake engineers, wind engineers, structural engineers, geologists, seismologists, meteorologists, and geotechnical specialists). As with any model of physical systems, particularly those with low frequencies of occurrence and potentially high severity outcomes, the actual losses from catastrophic events may differ from the results of simulation analyses. RMSI specifically disclaims any and all responsibilities, obligations and liability with respect to any decisions or advice made or given as a result of the information or your use thereof. RMSI specifically disclaims any and all responsibilities, obligations and liability including all warranties, whether expressed or implied, with respect to the report, including but not limited to, warranties of non-infringement, merchantability and fitness for a particular purpose. In no event shall RMSI (Or its subsidiary, or other affiliated companies) be liable for direct, indirect, special, incidental or consequential damages with respect to any decisions or advice made or given as a result of the contents of this information or your use thereof. The material contained in this report is the copyright of RMSI and may be used only for informational purposes only. RMSI makes no representations or warranties with respect to this information. For using any information from this report, you agree to the terms and provisions as outlined in this disclaimer. If you do not agree to them, please do not use this report. This advisory is a proprietary report by RMSI and can be redistributed only on an as-is basis. Any modifications to this report would be considered as a breach of terms and conditions on account of which this is shared.

Cyclone Advisory

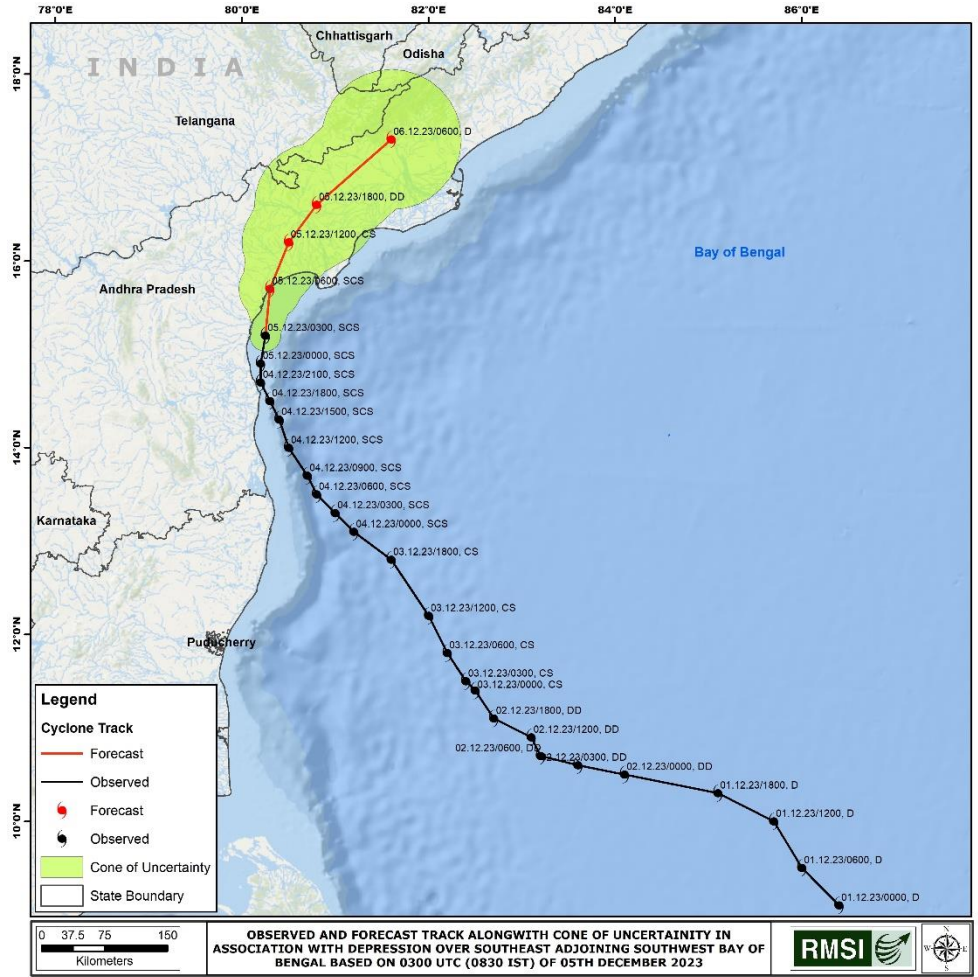


Figure 2: Track and Cone of Uncertainty for Cyclonic Storm

The Figure 3 and 4 depicts flooding Chennai and Vijayawada.

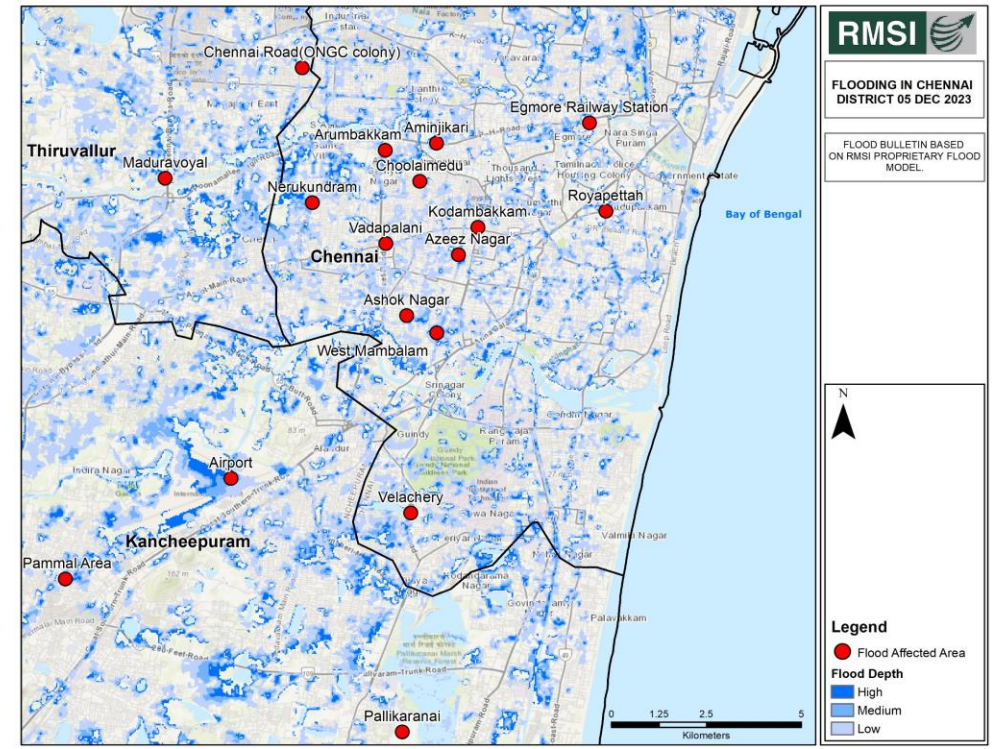


Figure 3: Expected flooding by Cyclone Michaung in Chennai

DISCLAIMER: This report contains information generated through the analyses, and model predictions based on data provided by IMD and compiled using proprietary computer risk assessment technology of RMSI Pvt. Ltd. The technology and data used in providing this information is based on the scientific data, mathematical and empirical models, and encoded experience of scientists and specialists (including without limitation, earthquake engineers, wind engineers, structural engineers, geologists, seismologists, meteorologists, and geotechnical specialists). As with any model of physical systems, particularly those with low frequencies of occurrence and potentially high severity outcomes, the actual losses from catastrophic events may differ from the results of simulation analyses. RMSI specifically disclaims any and all responsibilities, obligations and liability with respect to any decisions or advice made or given as a result of the information or your use thereof. RMSI specifically disclaims any and all responsibilities, obligations and liability including all warranties, whether expressed or implied, with respect to the report, including but not limited to, warranties of non-infringement, merchantability and fitness for a particular purpose. In no event shall RMSI (Or its subsidiary, or other affiliated companies) be liable for direct, indirect, special, incidental or consequential damages with respect to any decisions or advice made or given as a result of the contents of this information or your use thereof. The material contained in this report is the copyright of RMSI and may be used only for informational purposes only. RMSI makes no representations or warranties with respect to this information. For using any information from this report, you agree to the terms and provisions as outlined in this disclaimer. If you do not agree to them, please do not use this report. This advisory is a proprietary report by RMSI and can be redistributed only on an as-is basis. Any modifications to this report would be considered as a breach of terms and conditions on account of which this is shared.

Cyclone Advisory

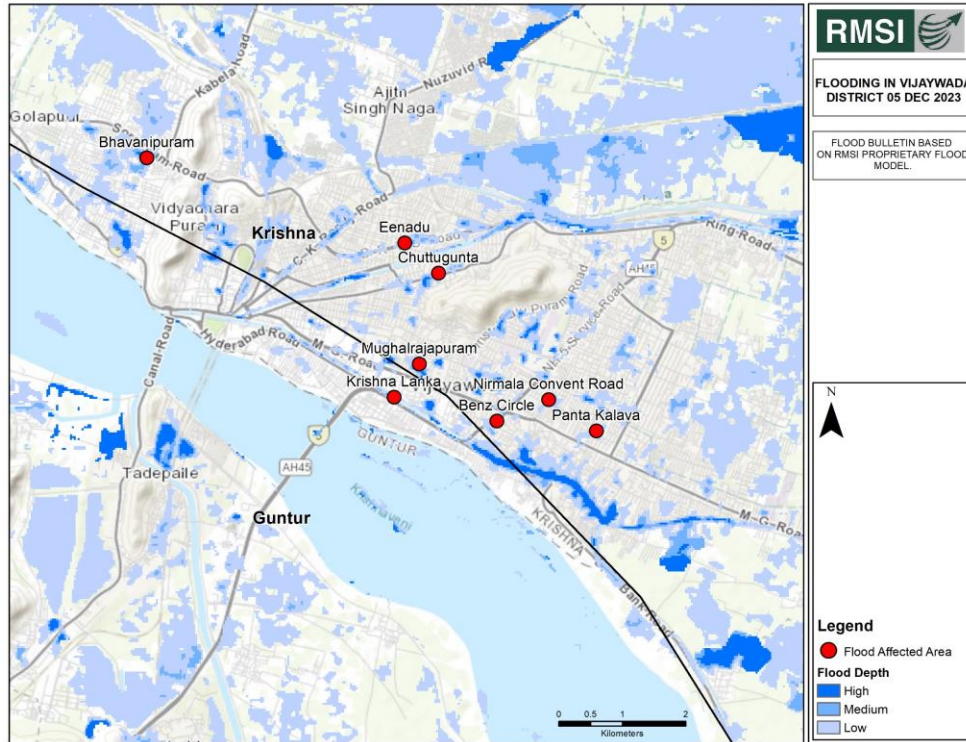


Figure 4: Estimated Flooding by Cyclone Michaung in Vijayawada

RMSI'S IMPACT ANALYSIS

RMSI's Impact Forecasting tool has conducted a comprehensive analysis, shedding light on the widespread consequences of the cyclone in both Andhra Pradesh and Tamil Nadu. Predominantly, the agricultural sector emerges as the hardest-hit in both states, bearing the brunt of the cyclonic impact. In Andhra Pradesh, the most severely affected sector after agriculture is

transportation, with disruptions causing significant challenges to the commuters.

Meanwhile, heavy rainfall over the past few days combined with water logging has left several areas in Chennai submerged and grappling with severe waterlogging. Several locations have witnessed inundation, some of these are shown as below:

Table 1: Major locations in Chennai with expected flood depth

City	Location of Flood	Flood Depth
Chennai	Royapettah	0.5-1m
	Azeez Nagar	0.5-1m
	West Mambalam	0.5-1m
	Velachery	0.5-1m
	Pallikarainai	0.5-1m
	Vadapalani	0.5-1m
	Arumbakkam	0.5-1m
	Sholinganallur WIPRO	0.5-1m
	Airport	1-1.5 m
	Egmore Railway Station	1-1.5 m
	Chennai Road(ONGC colony)	0.5-1m
	Nerukundram	1-1.5 m
	Maduravoyal	0.5-1m
	Ashok Nagar	1-1.5 m
	Pammal Area	1-1.5 m
	Sasivardhan Nagar	0.5-1m
	Kodambakkam	0.5-1m
	Choolaimedu	1-1.5 m
Aminjikari	1-1.5 m	

Cyclone Advisory



City	Location of Flood	Flood Depth
	Perungudi	1-1.5 m
	CTO Colony, Chennai	0.5-1m
Vijaywada	Nirmala Convent Road	1-1.5 m
	Mughalrajapuram	0.5-1m
	Eenadu	1-1.5 m
	Panta Kalava	0.5-1m
	Chuttugunta	0.5-1m
	Krishna Lanka	1-1.5 m
	Bhavanipuram	1-1.5 m
	Benz Circle	0.5-1m

Yesterday streets in Chennai resembled waterways as cars were being swept away. The Chennai Airport witnessed extreme rainfall and water logging on runway resulting in cancellation of flights. The situation has improved today with the airport resuming partial operations during the day.

The aftermath paints a grim picture, with a flood-like situation persisting in West Tambaram, CTO colony and Sasivaradhan Nagar area, compelling residents to resort to boat transportation amidst the ongoing challenges.

RMSI'S ECONOMIC IMPACT ANALYSIS

RMSI conducted an economic impact analysis on different sectors within the affected regions and it is expected the loss of the event, as of today is **INR 4,400 crore**. The increase in estimated economic loss from yesterday is mainly due to flooding in Andhra Pradesh. In Tamil Nadu, Chennai had experienced peak flooding yesterday and is slowly witnessing receding water levels. The sector wise impact is as under:

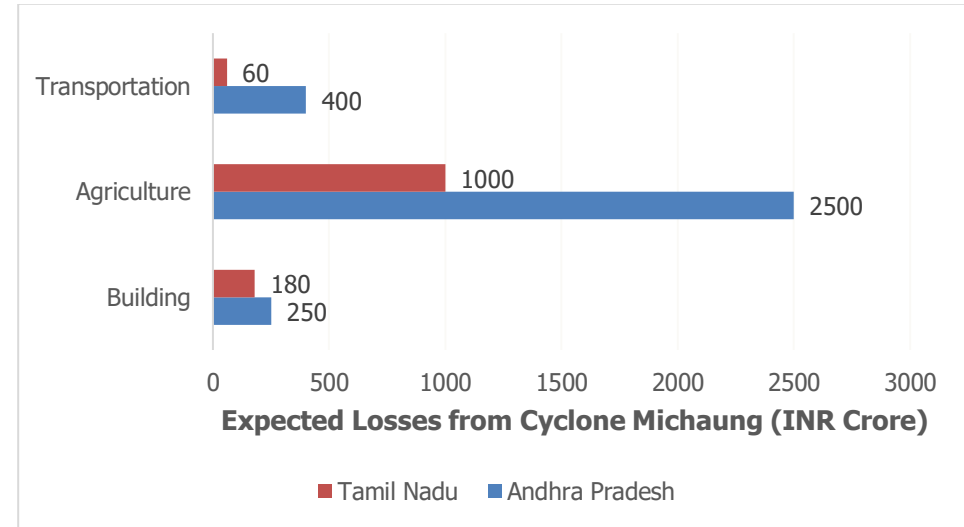


Figure 5: Expected loss from Cyclone Michaung

PIN CODE ANALYSIS

The following section analysis the Pincode wise impact of cyclonic winds in in Andhra Pradesh and Tamil Nadu. It is expected that cyclonic winds will impact around 950+ Pin Codes in 'Low' Category, 350 pin Codes in 'Medium' category and 6 Pincodes in 'High' category in Andhra Pradesh and Tamil Nadu collectively.

Cyclone Advisory

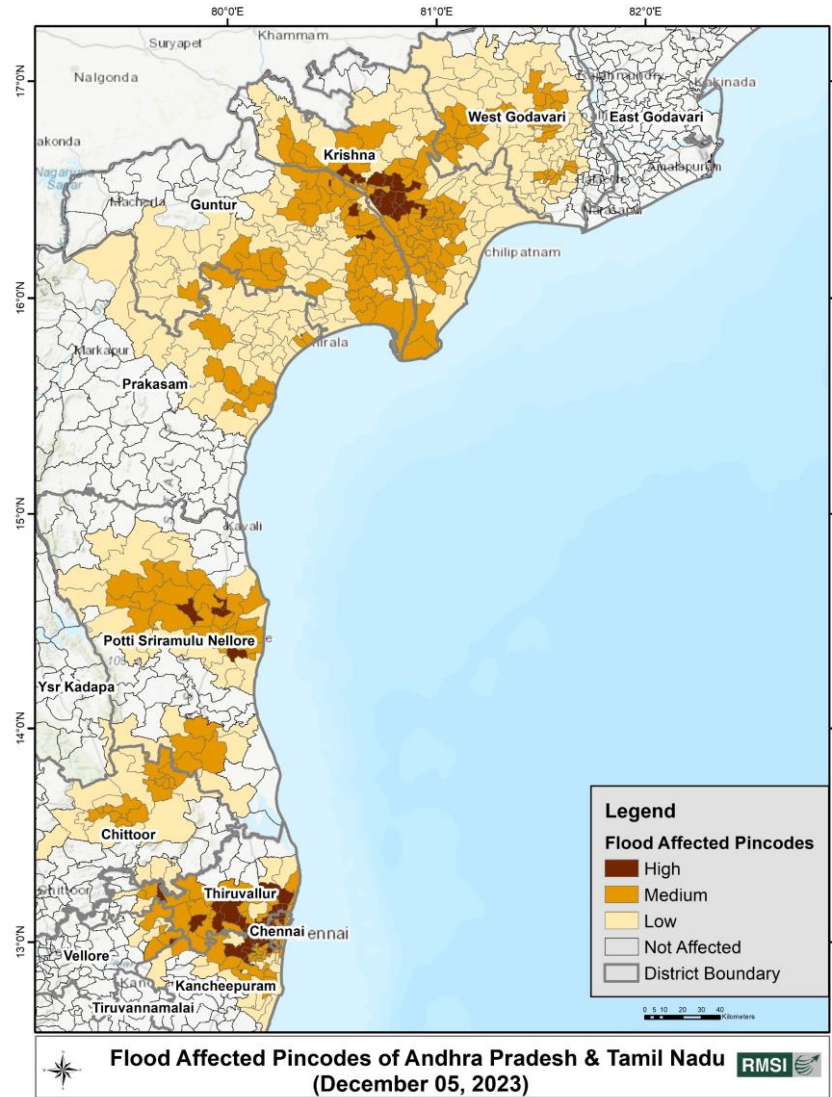


Figure 6: Pincodes likely to be impacted by floods due to Cyclone Michaung

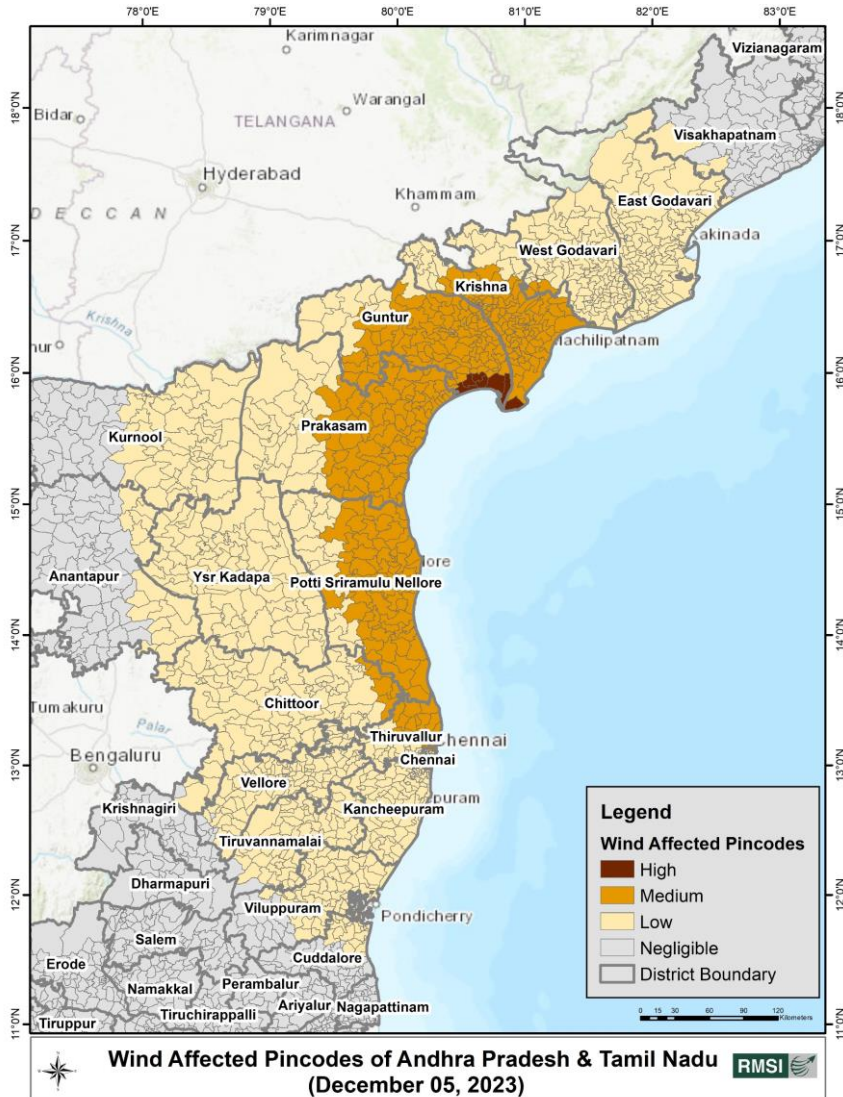


Figure 7: Pincodes likely to be impacted by winds due to Cyclone Michaung

DISCLAIMER: This report contains information generated through the analyses, and model predictions based on data provided by IMD and compiled using proprietary computer risk assessment technology of RMSI Pvt. Ltd. The technology and data used in providing this information is based on the scientific data, mathematical and empirical models, and encoded experience of scientists and specialists (including without limitation, earthquake engineers, wind engineers, structural engineers, geologists, seismologists, meteorologists, and geotechnical specialists). As with any model of physical systems, particularly those with low frequencies of occurrence and potentially high severity outcomes, the actual losses from catastrophic events may differ from the results of simulation analyses. RMSI specifically disclaims any and all responsibilities, obligations and liability with respect to any decisions or advice made or given as a result of the information or your use thereof. RMSI specifically disclaims any and all responsibilities, obligations and liability including all warranties, whether expressed or implied, with respect to the report, including but not limited to, warranties of non-infringement, merchantability and fitness for a particular purpose. In no event shall RMSI (Or its subsidiary, or other affiliated companies) be liable for direct, indirect, special, incidental or consequential damages with respect to any decisions or advice made or given as a result of the contents of this information or your use thereof. The material contained in this report is the copyright of RMSI and may be used only for informational purposes only. RMSI makes no representations or warranties with respect to this information. For using any information from this report, you agree to the terms and provisions as outlined in this disclaimer. If you do not agree to them, please do not use this report. This advisory is a proprietary report by RMSI and can be redistributed only on an as-is basis. Any modifications to this report would be considered as a breach of terms and conditions on account of which this is shared.

Cyclone Advisory



The table below indicates Pin Codes likely to be impacted in Low, Medium and high category

Table 2: 'Low' , 'Medium' and 'high' intensity wise likely impact on Pincodes by Cyclonic Storm

State Name	Low	Medium	High
Andhra Pradesh	508238; 515154; 515408; 515411; 515413; 515414; 515415; 515445; 515465; 515501; 515511; 515521; 515541; 515551; 515556; 515571; 515581; 515591; 516001; 516002; 516003; 516004; 516005; 516101; 516104; 516105; 516107; 516108; 516110; 516115; 516126; 516127; 516128; 516129; 516130; 516150; 516151; 516152; 516162; 516163; 516172; 516173; 516175; 516193; 516203; 516213; 516214; 516215; 516216; 516217; 516218; 516227; 516228; 516233; 516237; 516247; 516257; 516259; 516267; 516268; 516269; 516270; 516289; 516293; 516309; 516310; 516312; 516321; 516329; 516330; 516339; 516349; 516350; 516355; 516356;	517541; 517588; 517642; 517645; 517646; 520001; 520002; 520004; 520007; 520010; 520012; 520013; 520015; 521001; 521002; 521003; 521004; 521101; 521102; 521104; 521106; 521107; 521109; 521110; 521111; 521120; 521121; 521122; 521125; 521126; 521130; 521131; 521132; 521133; 521134; 521135; 521136; 521137; 521138; 521139; 521148; 521149; 521150; 521151; 521153; 521156; 521157; 521158; 521162; 521163; 521164; 521165; 521180; 521181; 521211; 521212; 521225; 521228; 521229; 521230; 521231; 521241; 521245; 521246; 521247; 521250; 521256; 521260; 521261; 521263; 521286; 521301; 521311; 521312; 521321;	522101; 522111; 522262; 522264; 522314; 522329

State Name	Low	Medium	High
	516359; 516361; 516362; 516380; 516390; 516391; 516396; 516401; 516411; 516421; 516431; 516432; 516433; 516434; 516439; 516444; 516454; 516464; 516474; 516484; 516501; 516502; 516503; 516504; 516505; 517001; 517002; 517004; 517101; 517102; 517112; 517113; 517123; 517124; 517125; 517126; 517127; 517128; 517129; 517130; 517131; 517132; 517152; 517167; 517172; 517192; 517193; 517194; 517213; 517214; 517234; 517235; 517236; 517237; 517247; 517257; 517277; 517280; 517291; 517297; 517299; 517305; 517319; 517325; 517326; 517350; 517351; 517352; 517370; 517390; 517391; 517401; 517403; 517408; 517414; 517415; 517416; 517417; 517418; 517419; 517421; 517422; 517423; 517424; 517425; 517429; 517432; 517501; 517502; 517503; 517504; 517505; 517506; 517507; 517520; 517526;	521322; 521323; 521324; 521325; 521326; 521327; 521328; 521329; 521330; 521331; 521332; 521333; 521343; 521344; 521345; 521356; 521366; 521369; 521390; 522001; 522002; 522003; 522004; 522005; 522006; 522009; 522015; 522016; 522017; 522018; 522019; 522020; 522034; 522102; 522112; 522113; 522124; 522201; 522202; 522211; 522212; 522213; 522233; 522234; 522235; 522236; 522237; 522238; 522239; 522240; 522256; 522257; 522258; 522259; 522261; 522265; 522268; 522301; 522302; 522303; 522304; 522305; 522306; 522307; 522308; 522309; 522310; 522311; 522312; 522313; 522315; 522316; 522317; 522318; 522324; 522325; 522330; 522341; 522401; 522402; 522403; 522408; 522410; 522411; 522412; 522436; 522438; 522501; 522502; 522503; 522508; 522509; 522529; 522549; 522601; 522603;	

DISCLAIMER: This report contains information generated through the analyses, and model predictions based on data provided by IMD and compiled using proprietary computer risk assessment technology of RMSI Pvt. Ltd. The technology and data used in providing this information is based on the scientific data, mathematical and empirical models, and encoded experience of scientists and specialists (including without limitation, earthquake engineers, wind engineers, structural engineers, geologists, seismologists, meteorologists, and geotechnical specialists). As with any model of physical systems, particularly those with low frequencies of occurrence and potentially high severity outcomes, the actual losses from catastrophic events may differ from the results of simulation analyses. RMSI specifically disclaims any and all responsibilities, obligations and liability with respect to any decisions or advice made or given as a result of the information or your use thereof. RMSI specifically disclaims any and all responsibilities, obligations and liability including all warranties, whether expressed or implied, with respect to the report, including but not limited to, warranties of non-infringement, merchantability and fitness for a particular purpose. In no event shall RMSI (Or its subsidiary, or other affiliated companies) be liable for direct, indirect, special, incidental or consequential damages with respect to any decisions or advice made or given as a result of the contents of this information or your use thereof. The material contained in this report is the copyright of RMSI and may be used only for informational purposes only. RMSI makes no representations or warranties with respect to this information. For using any information from this report, you agree to the terms and provisions as outlined in this disclaimer. If you do not agree to them, please do not use this report. This advisory is a proprietary report by RMSI and can be redistributed only on an as-is basis. Any modifications to this report would be considered as a breach of terms and conditions on account of which this is shared.

Cyclone Advisory



State Name	Low	Medium	High
	517536; 517551; 517561; 517569; 517571; 517581; 517582; 517583; 517584; 517586; 517587; 517589; 517590; 517591; 517592; 517599; 517619; 517620; 517640; 517641; 517643; 517644; 518002; 518003; 518004; 518006; 518007; 518010; 518101; 518102; 518112; 518122; 518123; 518124; 518134; 518135; 518145; 518155; 518165; 518166; 518176; 518186; 518196; 518206; 518216; 518217; 518218; 518220; 518222; 518401; 518405; 518411; 518412; 518422; 518432; 518442; 518452; 518467; 518501; 518502; 518508; 518510; 518511; 518512; 518513; 518523; 518533; 518543; 518553; 518563; 518573; 518583; 518593; 518594; 518598; 518599; 518674; 521105; 521170; 521175; 521178; 521182; 521183; 521184; 521185; 521190; 521201; 521202; 521207; 521213; 521214; 521215; 521226; 521227; 521235; 521340;	522611; 522614; 522615; 522616; 522617; 522619; 522626; 522646; 522647; 522649; 522657; 522658; 522659; 522660; 522661; 523001; 523002; 523101; 523104; 523105; 523109; 523110; 523111; 523113; 523114; 523115; 523116; 523117; 523135; 523155; 523157; 523165; 523166; 523167; 523168; 523169; 523170; 523171; 523180; 523181; 523182; 523183; 523184; 523185; 523186; 523187; 523190; 523201; 523211; 523212; 523213; 523214; 523225; 523226; 523230; 523240; 523241; 523245; 523246; 523247; 523252; 523253; 523254; 523260; 523261; 523262; 523263; 523264; 523265; 523270; 523271; 523272; 523273; 523274; 523279; 523280; 523281; 523286; 523291; 523292; 523301; 523302; 523303; 523304; 523305; 524001; 524002; 524003; 524004; 524101; 524121; 524123; 524124; 524126; 524127; 524129;	

State Name	Low	Medium	High
	521401; 521402; 521403; 521456; 521457; 522409; 522413; 522414; 522415; 522421; 522426; 522435; 522437; 522612; 522613; 522663; 523108; 523112; 523223; 523224; 523227; 523228; 523315; 523316; 523320; 523326; 523327; 523328; 523329; 523330; 523331; 523332; 523333; 523334; 523335; 523336; 523346; 523356; 523357; 523367; 523368; 523369; 523370; 523371; 523372; 523373; 524132; 524134; 524221; 524222; 524226; 524227; 524230; 524236; 524301; 524302; 524303; 524307; 524310; 524312; 524343; 524404; 524408; 531087; 531115; 531127; 533001; 533002; 533003; 533005; 533006; 533016; 533101; 533102; 533104; 533106; 533107; 533124; 533125; 533126; 533201; 533210; 533211; 533212; 533213; 533214; 533215; 533216; 533217; 533218; 533220; 533221; 533222; 533223; 533228; 533229;	524131; 524137; 524142; 524152; 524201; 524203; 524223; 524224; 524225; 524228; 524234; 524239; 524240; 524304; 524305; 524306; 524308; 524309; 524311; 524313; 524314; 524315; 524316; 524317; 524318; 524319; 524320; 524321; 524322; 524323; 524341; 524342; 524344; 524345; 524346; 524347; 524366; 524401; 524402; 524403; 524405; 524406; 524407; 524409; 524410; 524411; 524412; 524413; 524414; 524415; 524421; 534002; 534004; 534437	

DISCLAIMER: This report contains information generated through the analyses, and model predictions based on data provided by IMD and compiled using proprietary computer risk assessment technology of RMSI Pvt. Ltd. The technology and data used in providing this information is based on the scientific data, mathematical and empirical models, and encoded experience of scientists and specialists (including without limitation, earthquake engineers, wind engineers, structural engineers, geologists, seismologists, meteorologists, and geotechnical specialists). As with any model of physical systems, particularly those with low frequencies of occurrence and potentially high severity outcomes, the actual losses from catastrophic events may differ from the results of simulation analyses. RMSI specifically disclaims any and all responsibilities, obligations and liability with respect to any decisions or advice made or given as a result of the information or your use thereof. RMSI specifically disclaims any and all responsibilities, obligations and liability including all warranties, whether expressed or implied, with respect to the report, including but not limited to, warranties of non-infringement, merchantability and fitness for a particular purpose. In no event shall RMSI (Or its subsidiary, or other affiliated companies) be liable for direct, indirect, special, incidental or consequential damages with respect to any decisions or advice made or given as a result of the contents of this information or your use thereof. The material contained in this report is the copyright of RMSI and may be used only for informational purposes only. RMSI makes no representations or warranties with respect to this information. For using any information from this report, you agree to the terms and provisions as outlined in this disclaimer. If you do not agree to them, please do not use this report. This advisory is a proprietary report by RMSI and can be redistributed only on an as-is basis. Any modifications to this report would be considered as a breach of terms and conditions on account of which this is shared.

Cyclone Advisory



State Name	Low	Medium	High
	533232; 533233; 533234; 533235; 533236; 533237; 533238; 533239; 533240; 533241; 533242; 533244; 533247; 533248; 533249; 533250; 533251; 533252; 533253; 533254; 533255; 533256; 533260; 533261; 533262; 533263; 533264; 533274; 533284; 533285; 533286; 533287; 533288; 533289; 533290; 533291; 533292; 533293; 533294; 533295; 533296; 533297; 533305; 533306; 533307; 533308; 533309; 533339; 533340; 533341; 533342; 533343; 533344; 533345; 533346; 533348; 533401; 533406; 533407; 533408; 533428; 533429; 533430; 533431; 533432; 533433; 533434; 533435; 533436; 533437; 533440; 533444; 533445; 533446; 533447; 533448; 533449; 533450; 533461; 533462; 533463; 533464; 533468; 533483; 533577; 534001; 534003; 534005; 534006; 534007; 534101; 534102; 534111; 534112; 534122; 534123;		

State Name	Low	Medium	High
	534124; 534126; 534134; 534145; 534146; 534156; 534165; 534166; 534176; 534186; 534195; 534196; 534197; 534198; 534199; 534201; 534202; 534206; 534207; 534208; 534209; 534210; 534211; 534216; 534217; 534218; 534222; 534225; 534227; 534230; 534235; 534236; 534237; 534238; 534239; 534240; 534243; 534244; 534245; 534247; 534250; 534260; 534265; 534266; 534267; 534268; 534269; 534275; 534280; 534281; 534301; 534302; 534305; 534311; 534312; 534313; 534315; 534316; 534318; 534320; 534324; 534326; 534327; 534328; 534329; 534330; 534331; 534338; 534340; 534341; 534342; 534350; 534401; 534406; 534411; 534416; 534425; 534426; 534427; 534432; 534435; 534442; 534447; 534448; 534449; 534450; 534451; 534452; 534455; 534456; 534460; 534461; 534462; 534467; 534475		

DISCLAIMER: This report contains information generated through the analyses, and model predictions based on data provided by IMD and compiled using proprietary computer risk assessment technology of RMSI Pvt. Ltd. The technology and data used in providing this information is based on the scientific data, mathematical and empirical models, and encoded experience of scientists and specialists (including without limitation, earthquake engineers, wind engineers, structural engineers, geologists, seismologists, meteorologists, and geotechnical specialists). As with any model of physical systems, particularly those with low frequencies of occurrence and potentially high severity outcomes, the actual losses from catastrophic events may differ from the results of simulation analyses. RMSI specifically disclaims any and all responsibilities, obligations and liability with respect to any decisions or advice made or given as a result of the information or your use thereof. RMSI specifically disclaims any and all responsibilities, obligations and liability including all warranties, whether expressed or implied, with respect to the report, including but not limited to, warranties of non-infringement, merchantability and fitness for a particular purpose. In no event shall RMSI (Or its subsidiary, or other affiliated companies) be liable for direct, indirect, special, incidental or consequential damages with respect to any decisions or advice made or given as a result of the contents of this information or your use thereof. The material contained in this report is the copyright of RMSI and may be used only for informational purposes only. RMSI makes no representations or warranties with respect to this information. For using any information from this report, you agree to the terms and provisions as outlined in this disclaimer. If you do not agree to them, please do not use this report. This advisory is a proprietary report by RMSI and can be redistributed only on an as-is basis. Any modifications to this report would be considered as a breach of terms and conditions on account of which this is shared.

Cyclone Advisory



State Name	Low	Medium	High
Tamil Nadu	600001; 600002; 600004; 600005; 600007; 600010; 600011; 600016; 600017; 600025; 600028; 600032; 600034; 600036; 600037; 600040; 600041; 600042; 600043; 600044; 600045; 600048; 600049; 600050; 600053; 600054; 600055; 600056; 600058; 600059; 600061; 600062; 600063; 600064; 600069; 600071; 600072; 600073; 600074; 600076; 600077; 600083; 600087; 600089; 600090; 600091; 600092; 600095; 600096; 600097; 600100; 600106; 600117; 600119; 600122; 600123; 600124; 600125; 600126; 600127; 600128; 600130; 600131; 600132; 601301; 602001; 602002; 602003; 602021; 602023; 602024; 602025; 602026; 602105; 602106; 602108; 602117; 603001; 603002; 603003; 603004; 603101; 603102; 603103; 603104; 603105; 603106; 603107; 603108; 603109; 603110; 603111; 603112; 603127; 603201; 603202;	600019; 600021; 600039; 600051; 600052; 600057; 600060; 600066; 600067; 600068; 600081; 600099; 600103; 600118; 600120; 601101; 601102; 601103; 601201; 601202; 601203; 601204; 601205; 601206	

State Name	Low	Medium	High
	603203; 603204; 603209; 603210; 603211; 603301; 603302; 603303; 603304; 603305; 603306; 603307; 603308; 603309; 603310; 603311; 603312; 603313; 603314; 603319; 603401; 603402; 603403; 603405; 603406; 604001; 604101; 604102; 604151; 604152; 604153; 604154; 604201; 604202; 604203; 604204; 604205; 604206; 604207; 604208; 604210; 604301; 604302; 604303; 604304; 604305; 604306; 604307; 604401; 604402; 604403; 604404; 604405; 604406; 604407; 604408; 604409; 604410; 604501; 604502; 604503; 604504; 604505; 604601; 605014; 605101; 605102; 605103; 605104; 605105; 605106; 605107; 605108; 605109; 605110; 605111; 605201; 605202; 605203; 605301; 605302; 605401; 605402; 605501; 605502; 605601; 605602; 605651; 605652; 605701; 605702; 605751; 605752; 605754; 605755; 605756;		

DISCLAIMER: This report contains information generated through the analyses, and model predictions based on data provided by IMD and compiled using proprietary computer risk assessment technology of RMSI Pvt. Ltd. The technology and data used in providing this information is based on the scientific data, mathematical and empirical models, and encoded experience of scientists and specialists (including without limitation, earthquake engineers, wind engineers, structural engineers, geologists, seismologists, meteorologists, and geotechnical specialists). As with any model of physical systems, particularly those with low frequencies of occurrence and potentially high severity outcomes, the actual losses from catastrophic events may differ from the results of simulation analyses. RMSI specifically disclaims any and all responsibilities, obligations and liability with respect to any decisions or advice made or given as a result of the information or your use thereof. RMSI specifically disclaims any and all responsibilities, obligations and liability including all warranties, whether expressed or implied, with respect to the report, including but not limited to, warranties of non-infringement, merchantability and fitness for a particular purpose. In no event shall RMSI (Or its subsidiary, or other affiliated companies) be liable for direct, indirect, special, incidental or consequential damages with respect to any decisions or advice made or given as a result of the contents of this information or your use thereof. The material contained in this report is the copyright of RMSI and may be used only for informational purposes only. RMSI makes no representations or warranties with respect to this information. For using any information from this report, you agree to the terms and provisions as outlined in this disclaimer. If you do not agree to them, please do not use this report. This advisory is a proprietary report by RMSI and can be redistributed only on an as-is basis. Any modifications to this report would be considered as a breach of terms and conditions on account of which this is shared.

Cyclone Advisory



State Name	Low	Medium	High
	605757; 605758; 605766; 605803; 606102; 606107; 606115; 606601; 606603; 606604; 606611; 606701; 606702; 606704; 606705; 606706; 606707; 606709; 606710; 606751; 606752; 606753; 606754; 606755; 606801; 606802; 606803; 606804; 606805; 606806; 606807; 606808; 606811; 606901; 606902; 606903; 606904; 606905; 606906; 606907; 606908; 607001; 607002; 607003; 607004; 607005; 607006; 607101; 607102; 607103; 607104; 607105; 607106; 607107; 607108; 607109; 607112; 607201; 607203; 607204; 607205; 607209; 607301; 607302; 607401; 607402; 607805; 608501; 608801; 631001; 631002; 631003; 631004; 631005; 631006; 631051; 631052; 631101; 631102; 631151; 631152; 631201; 631202; 631203; 631204; 631205; 631206; 631207; 631208; 631209; 631210; 631211; 631212; 631213; 631301; 631302;		

State Name	Low	Medium	High
	631303; 631402; 631501; 631502; 631551; 631552; 631553; 631561; 631601; 631603; 631604; 631605; 631606; 631701; 631702; 632001; 632002; 632006; 632007; 632009; 632010; 632011; 632013; 632014; 632055; 632057; 632058; 632059; 632101; 632102; 632103; 632104; 632105; 632106; 632107; 632113; 632114; 632201; 632202; 632203; 632204; 632209; 632301; 632311; 632312; 632313; 632314; 632315; 632316; 632317; 632318; 632319; 632326; 632401; 632403; 632404; 632405; 632406; 632501; 632502; 632503; 632504; 632505; 632506; 632507; 632508; 632509; 632510; 632511; 632512; 632513; 632514; 632515; 632516; 632517; 632518; 632519; 632520; 632521; 632531; 632601; 632603; 632604; 635652; 635653; 635655; 635701; 635702; 635703; 635710; 635751; 635752; 635754; 635801; 635802; 635803;		

DISCLAIMER: This report contains information generated through the analyses, and model predictions based on data provided by IMD and compiled using proprietary computer risk assessment technology of RMSI Pvt. Ltd. The technology and data used in providing this information is based on the scientific data, mathematical and empirical models, and encoded experience of scientists and specialists (including without limitation, earthquake engineers, wind engineers, structural engineers, geologists, seismologists, meteorologists, and geotechnical specialists). As with any model of physical systems, particularly those with low frequencies of occurrence and potentially high severity outcomes, the actual losses from catastrophic events may differ from the results of simulation analyses. RMSI specifically disclaims any and all responsibilities, obligations and liability with respect to any decisions or advice made or given as a result of the information or your use thereof. RMSI specifically disclaims any and all responsibilities, obligations and liability including all warranties, whether expressed or implied, with respect to the report, including but not limited to, warranties of non-infringement, merchantability and fitness for a particular purpose. In no event shall RMSI (Or its subsidiary, or other affiliated companies) be liable for direct, indirect, special, incidental or consequential damages with respect to any decisions or advice made or given as a result of the contents of this information or your use thereof. The material contained in this report is the copyright of RMSI and may be used only for informational purposes only. RMSI makes no representations or warranties with respect to this information. For using any information from this report, you agree to the terms and provisions as outlined in this disclaimer. If you do not agree to them, please do not use this report. This advisory is a proprietary report by RMSI and can be redistributed only on an as-is basis. Any modifications to this report would be considered as a breach of terms and conditions on account of which this is shared.

Cyclone Advisory



State Name	Low	Medium	High
	635804; 635805; 635806; 635807; 635808; 635809; 635810; 635811; 635812; 635813; 635814; 635851; 635852; 635853		

Source: IMD Bulletin
<https://indianexpress.com/article/cities/chennai/chennai-rain-live-updates-rain-traffic-stalin-cyclone-tamil-nadu-9049685/>

DISCLAIMER: This report contains information generated through the analyses, and model predictions based on data provided by IMD and compiled using proprietary computer risk assessment technology of RMSI Pvt. Ltd. The technology and data used in providing this information is based on the scientific data, mathematical and empirical models, and encoded experience of scientists and specialists (including without limitation, earthquake engineers, wind engineers, structural engineers, geologists, seismologists, meteorologists, and geotechnical specialists). As with any model of physical systems, particularly those with low frequencies of occurrence and potentially high severity outcomes, the actual losses from catastrophic events may differ from the results of simulation analyses. RMSI specifically disclaims any and all responsibilities, obligations and liability with respect to any decisions or advice made or given as a result of the information or your use thereof. RMSI specifically disclaims any and all responsibilities, obligations and liability including all warranties, whether expressed or implied, with respect to the report, including but not limited to, warranties of non-infringement, merchantability and fitness for a particular purpose. In no event shall RMSI (Or its subsidiary, or other affiliated companies) be liable for direct, indirect, special, incidental or consequential damages with respect to any decisions or advice made or given as a result of the contents of this information or your use thereof. The material contained in this report is the copyright of RMSI and may be used only for informational purposes only. RMSI makes no representations or warranties with respect to this information. For using any information from this report, you agree to the terms and provisions as outlined in this disclaimer. If you do not agree to them, please do not use this report. This advisory is a proprietary report by RMSI and can be redistributed only on an as-is basis. Any modifications to this report would be considered as a breach of terms and conditions on account of which this is shared.