

Cyclone Tauktae, May 2021

Second Advisory

Cyclone Tauktae that originated as a depression near the Lakshadweep Islands on May 14, has intensified into an Extremely Severe Cyclonic Storm (166 to 221 kmph), according to the IMD bulletin No. 25 (ARB/01/2021) at 1430 IST on May 17. According to the IMD forecasts, it is expected to move north-north westwards and make a landfall on the coast of Gujarat near Porbandar and Mahuva (east of Diu) on the night of May 17, and further move towards Rajasthan, weakening into a depression but with gusting wind and accompanying rainfall.

Being the first cyclone to impact India in 2021, this ESCS has brought heavy rainfall and wind to all States and UTs on the western coast of India since May 14. A summary of potential wind and rainfall impacts (between 17th to 19th May) over the various States along the western coast of India has been given in Table 1 and 2.

Table 1: Forecasted Impact on the States in the next 48 hours- Rainfall

State	17 th May	18 th May	19 th May
Karnataka	Heavy to Very Heavy rainfall (isolated)	Light to moderate rainfall	
Gujarat	Extremely heavy rainfall (Saurashtra and Diu)	Heavy to Very Heavy rainfall (Saurashtra)	
Goa	Light to moderate rainfall	Light to moderate rainfall	
Maharashtra	Isolated heavy rainfall	Isolated heavy rainfall	
Rajasthan		Very Heavy to Extremely Heavy rainfall (isolated; south Rajasthan)	Heavy to Very Heavy rainfall (isolated)

¹ [Cyclone Tauktae LIVE Updates: IMD issues Orange, Yellow alert in 22 Madhya Pradesh districts, including Bhopal, Indore \(msn.com\)](#)

Table 2: Forecasted Impact on the States in the next 48 hours- Wind

State	17 th May	18 th May
Gujarat	Gale winds (155-165 kmph gusting to 185 kmph; Gujarat coast)	Gale winds (80-90 kmph gusting to 100 kmph)
Goa	Gale winds (180-190 kmph gusting to 210 kmph)	
Maharashtra	Gale winds (90-100 kmph gusting to 100 kmph)	
Rajasthan		Squally winds (45-55 kmph gusting to 65 kmph)

IMPACT

Six people have lost their lives to the cyclone in Karnataka and 121 villages are affected in the state¹. Barrelling towards Gujarat and travelling parallel to the coast, the cyclone has damaged several houses, uprooted trees and electric poles in Kerala, Goa and Karnataka. Electricity supply was disrupted in parts of Goa and Karnataka.

High-speed winds and lashing rains led to two barges offshore Mumbai (Bombay High) being de-anchored and drifting away². Mumbai has seen flooding, with several streets inundated. The busy Chhatrapati Shivaji

² [Cyclone Tauktae: Bombay High barge de-anchors, but all 261 onboard safe, says ONGC | Mumbai News - Times of India \(indiatimes.com\)](#)

Maharaj Airport suspended operations temporarily³. Vehicles were prevented from using the iconic Bandra-Worli sea link till 20:00 IST on May 17⁴. While India battles the devastating second wave of COVID-19 that is claiming thousands of lives across the country, the vaccination drive has been suspended in Mumbai.

Over 1.5 lakh people were evacuated from the low-lying areas along the Western Coast, particularly from Gujarat, in the wake of the Cyclone. The Indian Coast Guard rescued 15 fishermen off the coast of Goa⁵. With anticipated electricity disruptions, hospitals providing care for COVID-19 patients have been advised to ensure power back-up; and arrangements have been made for uninterrupted oxygen supply. The National Disaster Response Force (NDRF) has deployed 54 teams to manage the unfolding situation.



Figure 1: Visuals of cyclone impacts across western India (Source: Yahoo images)

³ Republic on Twitter: "#CycloneTauktae | Mumbai Airport extends suspension of operations till 8 PM today due to Cyclone Tauktae Tune in to know more: <https://t.co/RZHku3wOei> <https://t.co/TpplaqH8Cj>" / Twitter

⁴ Cyclone Tauktae: Mumbai cops on alert as strong winds, rain uproots trees, floods roads (yahoo.com)

ANALYSIS

RMSI has analysed potential wind and flood impact due to Cyclone Tauktae (based on IMD bulletin on 17th May at 1430 hours IST for wind and 1100 hours IST for flood and storm surge). The following map represent the result of the analysis:

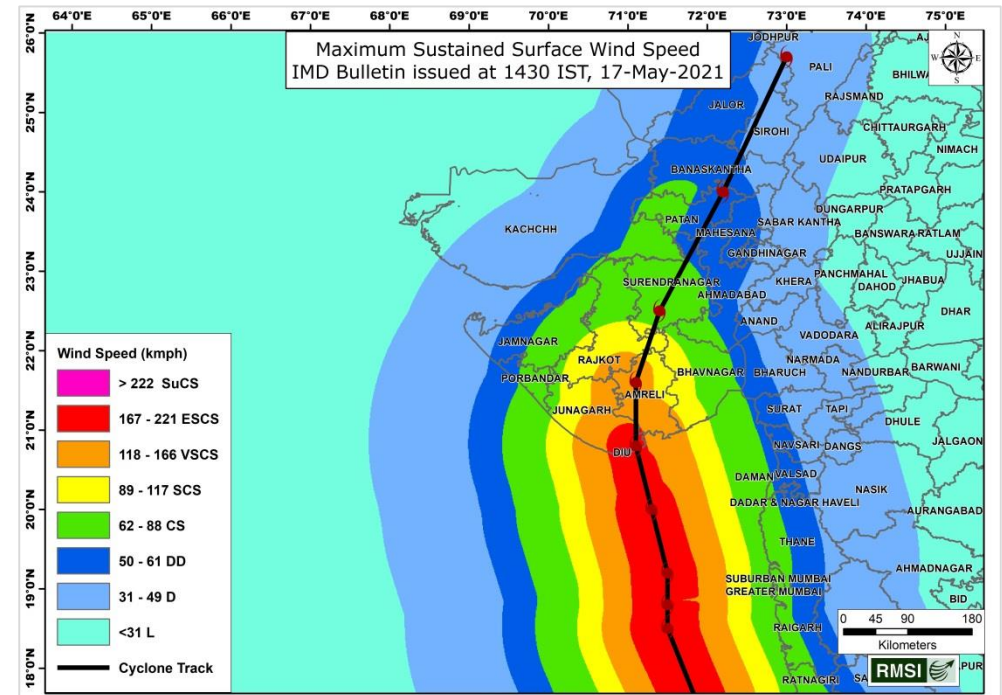


Figure 2: Estimated wind speeds for Cyclone Tauktae as per IMD bulletin on 17th May 1430 IST

⁵ ANI on Twitter: "Indian Coast Guard Ship Samarth responding to a distress call rescued 15 crew from a fishing boat named Milad, off Goa coast today. All crew are safe and boat is being towed ashore: Indian Coast Guard <https://t.co/tQTo9erON0>" / Twitter

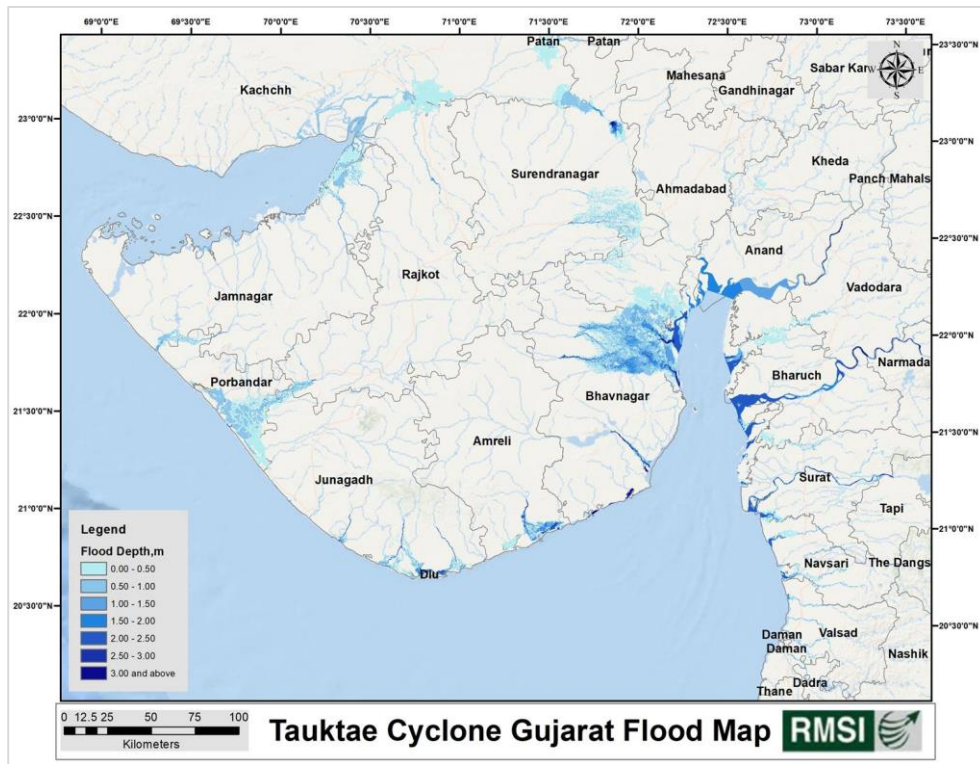


Figure 3: Potential flood and storm surge affected areas in Gujarat due to Cyclone Tauktae

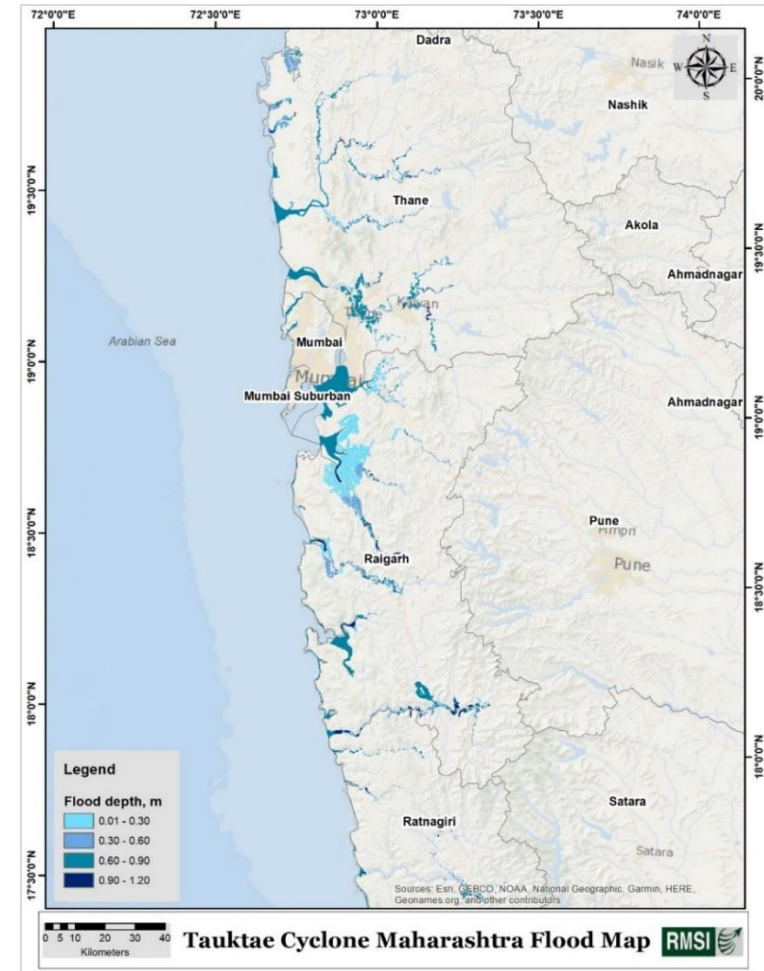


Figure 4: Potential flood affected areas in Maharashtra due to Cyclone Tauktae

DISCLAIMER: This report contains information generated through the analyses, and model predictions based on data provided by IMD and compiled using proprietary computer risk assessment technology of RMSI Pvt. Ltd. The technology and data used in providing this information is based on the scientific data, mathematical and empirical models, and encoded experience of scientists and specialists (including without limitation, earthquake engineers, wind engineers, structural engineers, geologists, seismologists, meteorologists, and geotechnical specialists). As with any model of physical systems, particularly those with low frequencies of occurrence and potentially high severity outcomes, the actual losses from catastrophic events may differ from the results of simulation analyses.

RMSI specifically disclaims any and all responsibilities, obligations and liability with respect to any decisions or advice made or given as a result of the information or your use thereof. RMSI specifically disclaims any and all responsibilities, obligations and liability including all warranties, whether expressed or implied, with respect to the report, including but not limited to, warranties of non-infringement, merchantability and fitness for a particular purpose. In no event shall RMSI (Or its subsidiary, or other affiliated companies) be liable for direct, indirect, special, incidental or consequential damages with respect to any decisions or advice made or given as a result of the contents of this information or your use thereof. The material contained in this report is the copyright of RMSI and may be used only for informational purposes only. RMSI makes no representations or warranties with respect to this information. For using any information from this report, you agree to the terms and provisions as outlined in this disclaimer. If you do not agree to them, please do not use this report.